

A
G1

D
D0

B
G4 or G2 for Bb

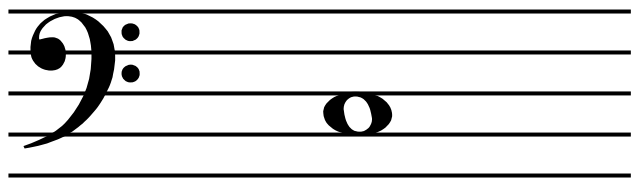
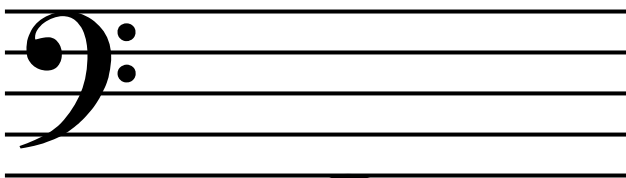
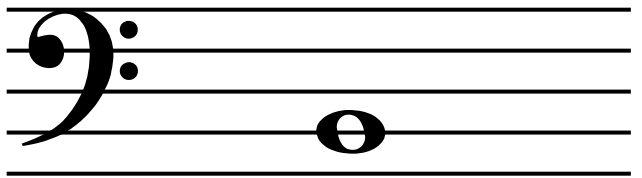
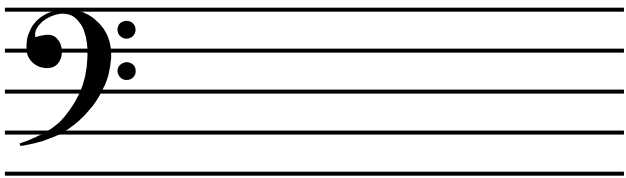
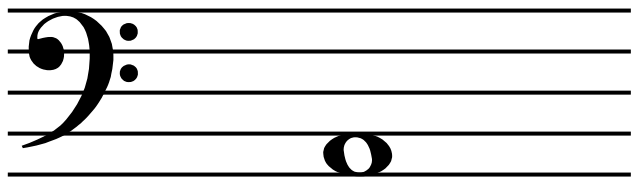
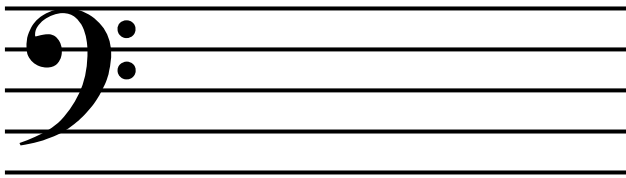
E
D1

C
2nd or 3rd position

F
D2 or 4 for F#

D
3rd or 4th position

G
G0



G
E2 or E4 for G#

F
G 5th or 6th position

A
A0

E
G 4th or 5th Position

B
A1

E
E0

C
A2 or 4 for C#

F
E1-1/2 position, or E1 for F#