

A  
A0

D  
D0

B  
A1

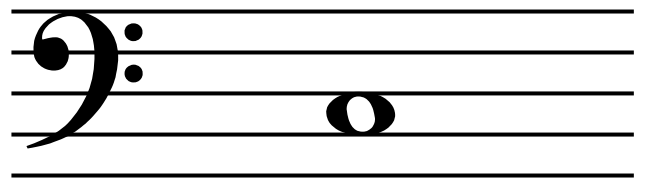
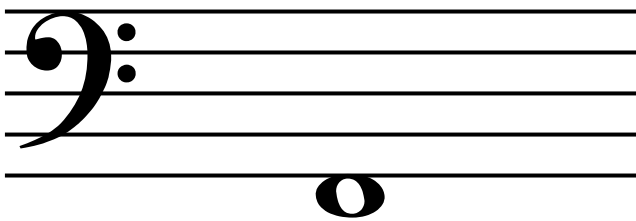
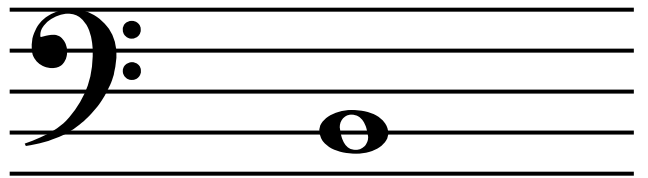
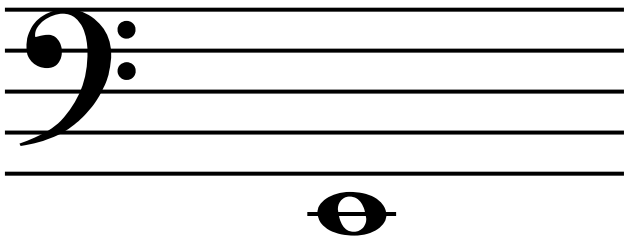
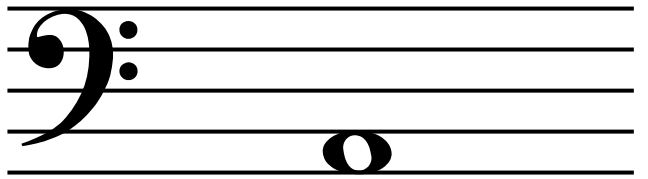
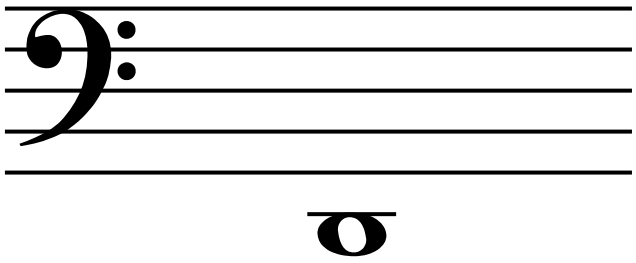
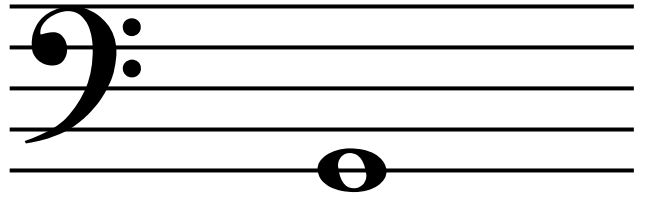
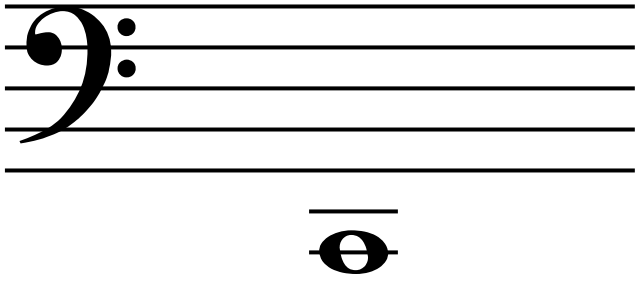
E  
D1

C  
A2 or A3 for C#

F  
D2 or D3 for F#

D  
A4

G  
D4



G  
G0

C  
C0

A  
G1

D  
C1

B  
G3 or 2 for Bb (flat)

E  
C3 or 2 for Eb (flat)

C  
G4

F  
C4