

*Violin*

# *Holiday Carols for Strings*

*Arranged for The Orchestra Students of  
Davison Community Schools  
by John Marttisa*

*Angels We Have Heard On High*

*Away in a Manger*

*Chanukah Song*

*Deck the Halls*

*Do You Hear What I Hear?*

*Dreydel, Dreydel, Dreydel*

*The First Noel*

*Frosty The Snowman*

*God Rest ye Merry Gentlemen*

*Good King Wenceslas*

*Hark! the Herald Angels Sing*

*Jingle Bells*

*Jolly Old Saint Nicholas*

*Joy To the World*

*Let It Snow*

*O Come, All Ye Faithful*

*Rudolph the Red Nose Reindeer*

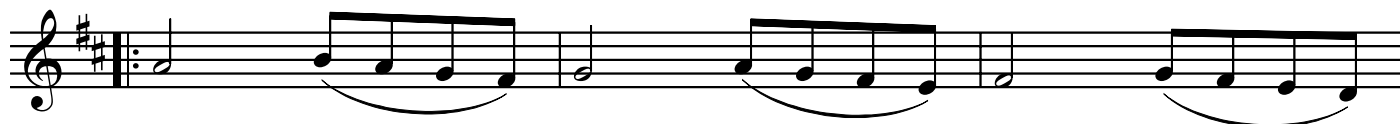
*Silent Night*

*Up On the Housetop*

*We Three Kings of Orient Are*

*We Wish You a Merry Christmas*

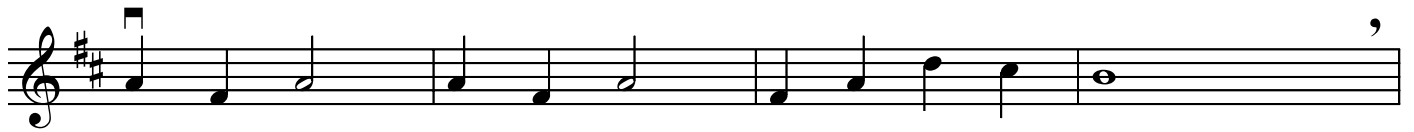
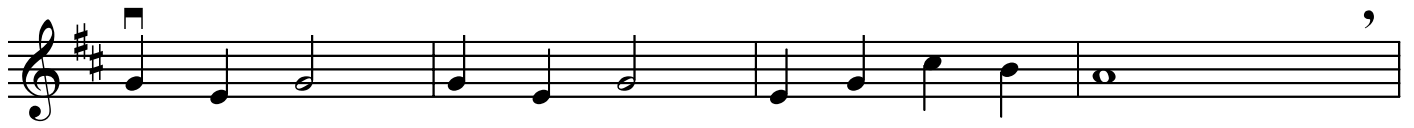
*Angels We Have Heard on High*



*Away in a Manger*



*The Chanukah Song*



*Deck the Halls*



*Do You Hear What I Hear*

Musical notation for the first piece, consisting of three staves. The key signature is one sharp (F#) and the time signature is common time (C). The first staff begins with a quarter rest followed by a quarter note G4, then a half note A4, and a quarter note B4. The second staff continues with a quarter note C5, a quarter note B4, and a quarter note A4. The third staff concludes with a quarter note G4, a quarter note F#4, and a quarter note E4. Various musical notations such as slurs, ties, and accents are used throughout the piece.

*Dreydel, Dreydel, Dreydel*

Musical notation for the second piece, consisting of four staves. The key signature is one sharp (F#) and the time signature is common time (C). The first staff begins with a quarter note G4, a quarter note A4, and a quarter note B4. The second staff continues with a quarter note C5, a quarter note B4, and a quarter note A4. The third staff concludes with a quarter note G4, a quarter note F#4, and a quarter note E4. The fourth staff continues with a quarter note D4, a quarter note C4, and a quarter note B3. The piece features a simple, repetitive melody with various musical notations including slurs, ties, and accents.

*The First Noel*

Musical score for 'The First Noel' in G major and 3/4 time. The score consists of two staves. The first staff begins with a treble clef, a key signature of one sharp (F#), and a 3/4 time signature. It features a melodic line with a repeat sign and a first ending. The second staff provides a harmonic accompaniment.

*Frosty the Snowman*

Musical score for 'Frosty the Snowman' in C major and common time (C). The score consists of three staves. The first staff is the melody, followed by a second staff with a first ending and a second ending marked with a '2'. The third staff continues the melody and includes the instruction 'D.C. al Fine'. The word 'Fine' is written below the second ending.

*God Rest Ye Merry Gentlemen*

Musical score for 'God Rest Ye Merry Gentlemen' in C major and common time (C). The score consists of four staves, all in treble clef. The first staff begins with a first ending marked with a 'V'. The piece concludes with a final double bar line.

*Good King Wenceslas*

Musical score for 'Good King Wenceslas' in G major, 4/4 time. The score consists of four staves. The first three staves are vocal parts, and the fourth is a piano accompaniment. The melody is simple and features a prominent eighth-note pattern in the first half of each measure. The piano part provides harmonic support with chords and a steady eighth-note accompaniment.

*Heark! The Herald Angels Sing*

Musical score for 'Heark! The Herald Angels Sing' in G major, 4/4 time. The score consists of five staves. The first four staves are vocal parts, and the fifth is a piano accompaniment. The melody is more complex than the first piece, featuring dotted rhythms and eighth-note patterns. The piano part includes chords and a steady eighth-note accompaniment.

*Jingle Bells*

Musical score for "Jingle Bells" in G major, 4/4 time. The score consists of four staves. The first two staves are the main melody, with the second staff ending with a double bar line and the word "Fine". The third and fourth staves are accompaniment, with the fourth staff ending with a double bar line and the instruction "D.C. al Fine".

*Jolly Old St. Nicholas*

Musical score for "Jolly Old St. Nicholas" in G major, 4/4 time. The score consists of two staves. Both staves feature a continuous eighth-note accompaniment pattern.

*Joy to the World*

Musical score for "Joy to the World" in G major, 4/4 time. The score consists of three staves. The first staff is the main melody, and the second and third staves are accompaniment.

*Let It Snow*

*Swing*

*V*

*Fine*

*D.C. al Fine*

*O Come All Ye Faithful*

*V*



*Rudolph the Red Nosed Reindeer*

Musical score for 'Rudolph the Red Nosed Reindeer' in G major and common time. The score consists of four staves. The first staff begins with a treble clef, a key signature of one sharp (F#), and a common time signature (C). It features a melody with eighth and quarter notes, including a fermata over a quarter note. The second staff continues the melody and includes a first ending bracket with a double bar line and repeat dots, followed by a second ending marked with a '2'. The piece concludes with the word 'Fine'. The third and fourth staves provide a harmonic accompaniment with quarter and eighth notes, ending with the instruction 'D.C. al Fine'.

*Silent Night*

Musical score for 'Silent Night' in G major and 3/4 time. The score consists of four staves. The first staff begins with a treble clef, a key signature of one sharp (F#), and a 3/4 time signature. The melody is characterized by dotted rhythms and is written with a slur. The second and third staves continue the melody with similar dotted rhythms and slurs. The fourth staff provides a harmonic accompaniment with dotted rhythms and slurs, concluding the piece.

*Up on the Housetop*

Musical score for "Up on the Housetop" in G major and common time. The score consists of four staves of music. The first staff begins with a treble clef, a key signature of one sharp (F#), and a common time signature (C). The melody is composed of eighth and quarter notes, with some notes beamed together. The second and third staves continue the melody with similar rhythmic patterns and some rests. The fourth staff concludes the piece with a double bar line.

*We Three Kings*

Musical score for "We Three Kings" in G major and 3/4 time. The score consists of five staves of music. The first staff begins with a treble clef, a key signature of one sharp (F#), and a 3/4 time signature. The melody is characterized by long, sweeping lines with many slurs, indicating a slow and legato performance. The second and third staves continue the melody with similar phrasing. The fourth and fifth staves conclude the piece with a double bar line.

*We Wish You a Merry Christmas*



*Fine*



*D.C. al Fine*

*Happy  
Holidays!*