

*Viola*

# *Holiday Carols for Strings*

*Arranged for The Orchestra Students of  
Davison Community Schools  
by John Marttila*

*Angels We Have Heard On High*

*Away in a Manger*

*Chanukah Song*

*Deck the Halls*

*Do You Hear What I Hear?*

*Dreydel, Dreydel, Dreydel*

*The First Noel*

*Frosty The Snowman*

*God Rest ye Merry Gentlemen*

*Good King Wenceslas*

*Hark! the Herald Angels Sing*

*Jingle Bells*

*Jolly Old Saint Nicholas*

*Joy To the World*

*Let It Snow*

*O Come, All Ye Faithful*

*Rudolph the Red Nose Reindeer*

*Silent Night*

*Up On the Housetop*

*We Three Kings of Orient Are*

*We Wish You a Merry Christmas*

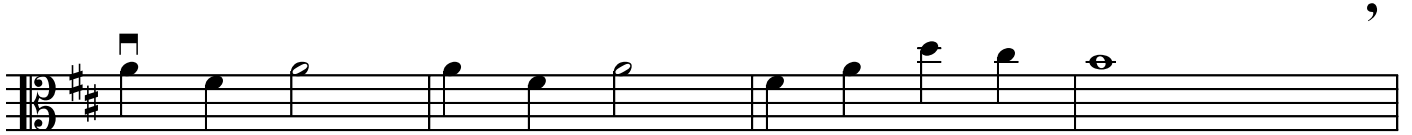
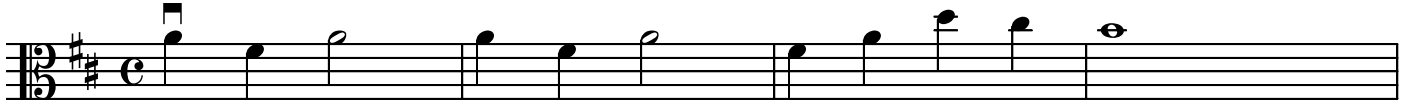
*Angels We Have Heard on High*



*Away in a Manger*



*The Chanukah Song*



*Deck the Halls*



*Do You Hear What I Hear*

Musical score for 'Do You Hear What I Hear' in G major, 2/4 time. The score consists of three staves. The first staff begins with a treble clef, a key signature of one sharp (F#), and a common time signature (C). The melody starts with a quarter note G4, followed by quarter notes A4, B4, C5, B4, A4, G4. A half note G4 is followed by a quarter rest. The melody continues with quarter notes G4, A4, B4, C5, B4, A4, G4. The second staff continues the melody with quarter notes G4, A4, B4, C5, B4, A4, G4. A half note G4 is followed by a quarter rest. The melody continues with quarter notes G4, A4, B4, C5, B4, A4, G4. The third staff continues the melody with quarter notes G4, A4, B4, C5, B4, A4, G4. A half note G4 is followed by a quarter rest. The melody continues with quarter notes G4, A4, B4, C5, B4, A4, G4. The piece ends with a double bar line.

*Dreydel, Dreydel, Dreydel*

Musical score for 'Dreydel, Dreydel, Dreydel' in G major, 2/4 time. The score consists of four staves. The first staff begins with a treble clef, a key signature of one sharp (F#), and a common time signature (C). The melody starts with a quarter note G4, followed by quarter notes A4, B4, C5, B4, A4, G4. A half note G4 is followed by a quarter rest. The melody continues with quarter notes G4, A4, B4, C5, B4, A4, G4. The second staff continues the melody with quarter notes G4, A4, B4, C5, B4, A4, G4. A half note G4 is followed by a quarter rest. The melody continues with quarter notes G4, A4, B4, C5, B4, A4, G4. The third staff continues the melody with quarter notes G4, A4, B4, C5, B4, A4, G4. A half note G4 is followed by a quarter rest. The melody continues with quarter notes G4, A4, B4, C5, B4, A4, G4. The fourth staff continues the melody with quarter notes G4, A4, B4, C5, B4, A4, G4. A half note G4 is followed by a quarter rest. The melody continues with quarter notes G4, A4, B4, C5, B4, A4, G4. The piece ends with a double bar line.

*The First Noel*

Musical score for 'The First Noel' in 3/4 time, key of G major. The score consists of two staves. The first staff begins with a 'V' (Vivace) marking above the first measure. The piece concludes with a double bar line and repeat dots.

*Frosty the Snowman*

Musical score for 'Frosty the Snowman' in common time (C). The score consists of three staves. The first staff begins with a 'V' (Vivace) marking above the first measure. The second staff contains a first ending bracket with a '2' above it, followed by a 'V' marking above the start of the second ending. The word 'Fine' is written below the second staff. The piece concludes with a double bar line and repeat dots.

*D.C. al Fine*

*God Rest Ye Merry Gentlemen*

Musical score for 'God Rest Ye Merry Gentlemen' in common time (C). The score consists of four staves. The first staff begins with a 'V' (Vivace) marking above the first measure. The piece concludes with a double bar line and repeat dots.

*Good King Wenceslas*

Musical score for 'Good King Wenceslas' in G major and 3/4 time. The score consists of four staves. The first three staves are vocal parts, and the fourth is a basso continuo line. The melody is simple and features a prominent trill in the final measure of the first three staves.

*Heark! The Herald Angels Sing*

Musical score for 'Heark! The Herald Angels Sing' in G major and 3/4 time. The score consists of five staves. The first four staves are vocal parts, and the fifth is a basso continuo line. The melody is more complex than the first piece, featuring many trills and grace notes throughout.



*Let It Snow*

*Swing*

*Fine*

*D.C. al Fine*

*O Come All Ye Faithful*

*V*

*Rudolph the Red Nosed Reindeer*

The first two staves of the musical score for 'Rudolph the Red Nosed Reindeer'. The first staff begins with a treble clef, a key signature of one sharp (F#), and a common time signature (C). It contains the first four measures of the melody, featuring eighth and quarter notes with accents and slurs. The second staff continues the melody for the next four measures, including a repeat sign and a second ending marked with a '2'. The piece concludes with the word 'Fine'.

The last two staves of the musical score for 'Rudolph the Red Nosed Reindeer'. The third staff contains the next four measures of the melody, and the fourth staff contains the final four measures, ending with the instruction 'D.C. al Fine'.

*Silent Night*

The four staves of the musical score for 'Silent Night'. The first staff begins with a treble clef, a key signature of one sharp (F#), and a 3/4 time signature. The melody is characterized by long, flowing lines with slurs and accents, typical of the traditional carol. The piece concludes with a final double bar line.

*Up on the Housetop*

Musical score for "Up on the Housetop" in G major and common time. The score consists of four staves of music. The first staff begins with a treble clef, a key signature of one sharp (F#), and a common time signature (C). The melody is written in a single voice, featuring eighth and quarter notes with various rests and accents. The piece concludes with a double bar line.

*We Three Kings*

Musical score for "We Three Kings" in G major and 3/4 time. The score consists of five staves of music. The first staff begins with a treble clef, a key signature of one sharp (F#), and a 3/4 time signature. The melody is characterized by a series of slurs over eighth and quarter notes, creating a flowing, melodic line. The piece ends with a double bar line.

*We Wish You a Merry Christmas*



*Fine*



*D.C. al Fine*

*Happy  
Holidays!*