

*Violin Advanced*

# *Holiday Carols for Strings*

*Arranged for The Orchestra Students of  
Davison Community Schools  
by John Marttila*

*Angels We Have Heard On High*

*Away in a Manger*

*Chanukah Song*

*Deck the Halls*

*Do You Hear What I Hear?*

*Dreydel, Dreydel, Dreydel*

*The First Noel*

*Frosty The Snowman*

*God Rest ye Merry Gentlemen*

*Good King Wenceslas*

*Hark! the Herald Angels Sing*

*Jingle Bells*

*Jolly Old Saint Nicholas*

*Joy To the World*

*Let It Snow*

*O Come, All Ye Faithful*

*Rudolph the Red Nose Reindeer*

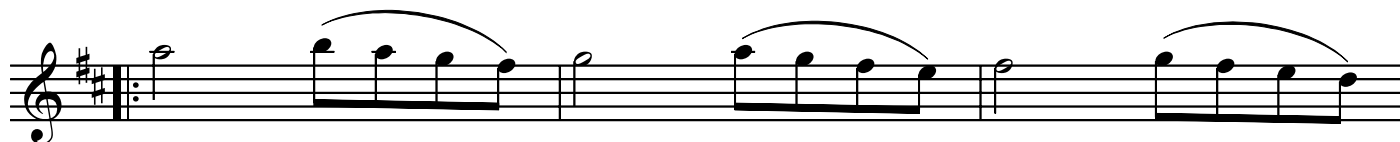
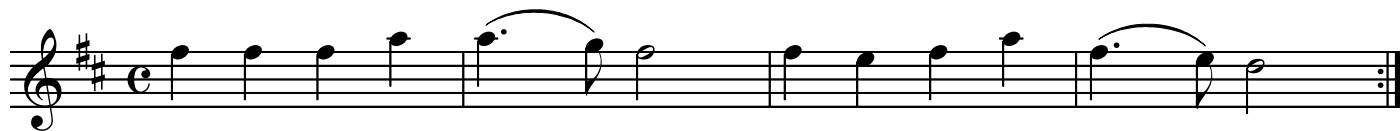
*Silent Night*

*Up On the Housetop*

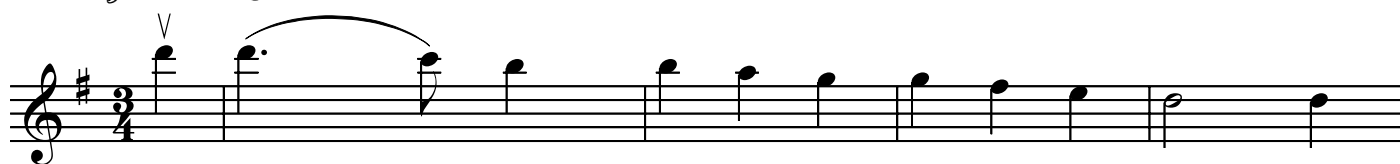
*We Three Kings of Orient Are*

*We Wish You a Merry Christmas*

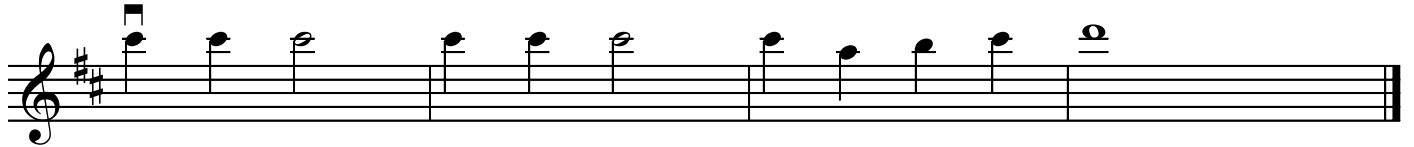
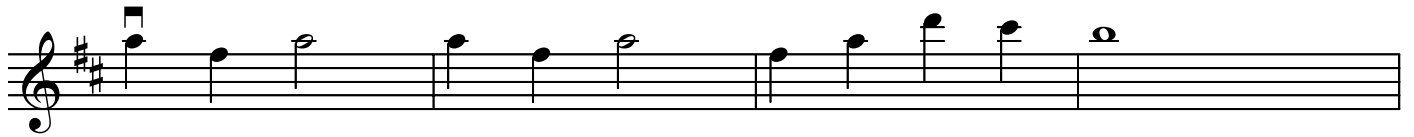
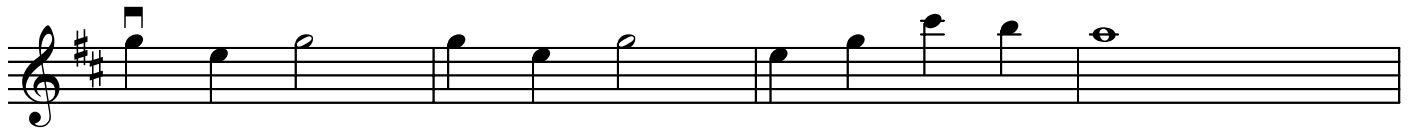
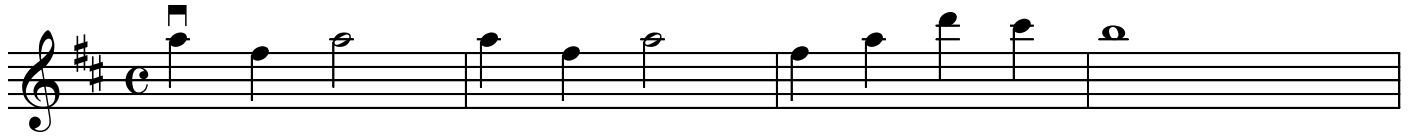
*Angels We Have Heard on High*



*Away in a Manger*



*The Chanukah Song*



*Deck the Halls*



*Do You Hear What I Hear*

Musical notation for the first piece, consisting of three staves. The key signature is one sharp (F#) and the time signature is common time (C). The melody is written in treble clef. The first staff begins with a quarter note G4, followed by quarter notes A4, B4, C5, D5, E5, F#5, G5, and a half note G5. The second staff continues with quarter notes A5, B5, C6, D6, E6, F#6, G6, and a half note G6. The third staff concludes with quarter notes A6, B6, C7, D7, E7, F#7, G7, and a half note G7, ending with a double bar line.

*Dreydel, Dreydel, Dreydel*

Musical notation for the second piece, consisting of four staves. The key signature is one sharp (F#) and the time signature is common time (C). The melody is written in treble clef. The first staff begins with a quarter note G4, followed by quarter notes A4, B4, C5, D5, E5, F#5, G5, and a half note G5. The second staff continues with quarter notes A5, B5, C6, D6, E6, F#6, G6, and a half note G6. The third staff concludes with quarter notes A6, B6, C7, D7, E7, F#7, G7, and a half note G7, ending with a double bar line.

*The First Noel*

Two staves of musical notation for 'The First Noel'. The first staff begins with a treble clef, a key signature of one sharp (F#), and a 3/4 time signature. It features a melodic line with a repeat sign and a first ending bracket. The second staff continues the melody with various note values and rests.

*Frosty the Snowman*

Three staves of musical notation for 'Frosty the Snowman'. The first staff is in treble clef with a common time signature (C). It includes a melodic line with a second ending bracket. The second staff contains a first ending with a repeat sign and a second ending with a fermata. The word 'Fine' is written below the second staff. The third staff continues the melody. The instruction 'D.C. al Fine' is written at the bottom right.

*God Rest Ye Merry Gentlemen*

Four staves of musical notation for 'God Rest Ye Merry Gentlemen'. The first staff is in treble clef with a common time signature (C) and begins with a fermata. The subsequent staves continue the melodic line with various note values and rests.

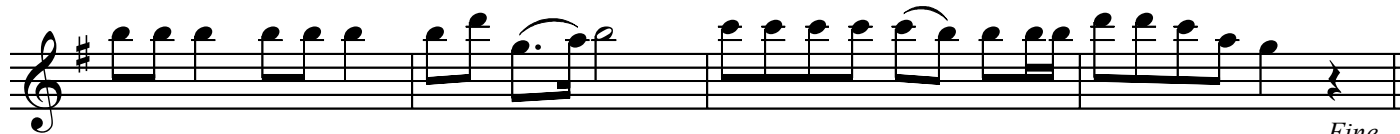
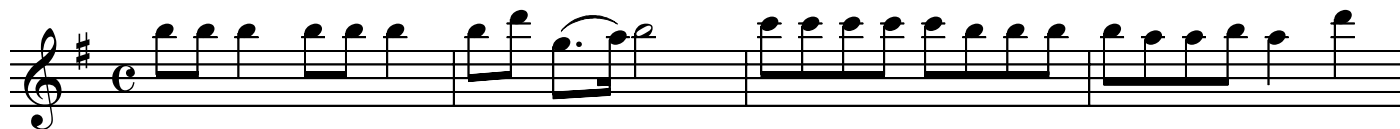
*Good King Wenceslas*

Musical score for 'Good King Wenceslas' in G major, 4/4 time. The score consists of four staves. The melody is written in treble clef. The first staff begins with a treble clef, a key signature of one sharp (F#), and a common time signature (C). The melody consists of quarter notes and half notes, with a slur over the final two measures of the first staff. The second and third staves continue the melody with similar note values and slurs. The fourth staff concludes the piece with a double bar line.

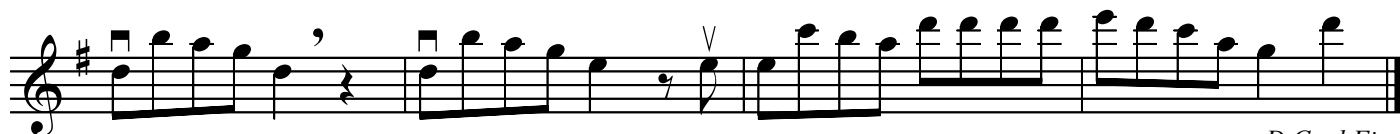
*Heark! The Herald Angels Sing*

Musical score for 'Heark! The Herald Angels Sing' in G major, 4/4 time. The score consists of five staves. The melody is written in treble clef. The first staff begins with a treble clef, a key signature of one sharp (F#), and a common time signature (C). The melody features dotted rhythms and slurs. The second and third staves continue the melody with similar note values and slurs. The fourth and fifth staves conclude the piece with a double bar line.

*Jingle Bells*

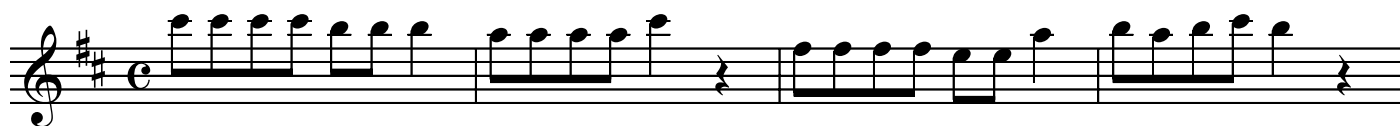


*Fine*

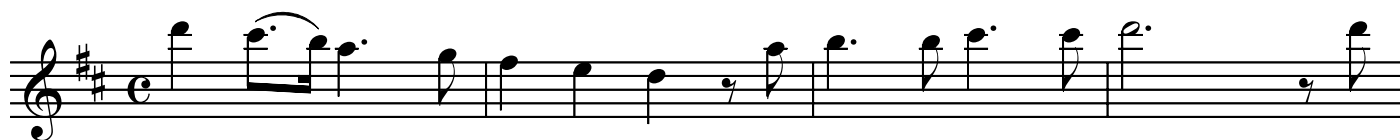


*D.C. al Fine*

*Jolly Old St. Nicholas*



*Joy to the World*



*Let It Snow*

*Swing*

Musical score for 'Let It Snow' in C major, 4/4 time, Swing tempo. The score consists of four staves of music. The first staff begins with a treble clef, a common time signature, and a key signature of one sharp (F#). The melody is written in a simple, accessible style. The second staff ends with the word 'Fine'. The third staff continues the melody. The fourth staff ends with a double bar line and the instruction 'D.C. al Fine'.

*Fine*

*D.C. al Fine*

*O Come All Ye Faithful*

Musical score for 'O Come All Ye Faithful' in D major, 4/4 time. The score consists of five staves of music. The first staff begins with a treble clef, a common time signature, and a key signature of two sharps (F# and C#). The melody is written in a simple, accessible style. The second staff continues the melody. The third staff continues the melody. The fourth staff continues the melody. The fifth staff ends with a double bar line.



*Rudolph the Red Nosed Reindeer*

First staff of music for 'Rudolph the Red Nosed Reindeer'. It begins with a treble clef, a key signature of one sharp (F#), and a common time signature (C). The melody starts with a quarter note G4, followed by quarter notes A4 and B4, then a quarter rest. This is followed by a quarter note G4, a quarter note F#4, and a quarter note E4. The staff continues with a quarter note D4, a quarter note C4, and a quarter note B3. The melody then moves to a quarter note A3, a quarter note G3, and a quarter note F#3. The staff concludes with a quarter note E3, a quarter note D3, and a quarter note C3.

Second staff of music for 'Rudolph the Red Nosed Reindeer'. It continues the melody from the first staff. It features a first ending bracket over the final two measures, with a second ending bracket over the next two measures. The staff concludes with a double bar line.

*Fine*

Third staff of music for 'Rudolph the Red Nosed Reindeer'. It continues the melody with a quarter note B3, a quarter note A3, and a quarter note G3. The staff concludes with a quarter note F#3, a quarter note E3, and a quarter note D3.

Fourth staff of music for 'Rudolph the Red Nosed Reindeer'. It continues the melody with a quarter note C3, a quarter note B2, and a quarter note A2. The staff concludes with a quarter note G2, a quarter note F#2, and a quarter note E2.

*D.C. al Fine*

*Silent Night*

First staff of music for 'Silent Night'. It begins with a treble clef, a key signature of one sharp (F#), and a 3/4 time signature. The melody starts with a half note G4, followed by a quarter note A4, and a quarter note B4. The staff continues with a half note G4, a quarter note F#4, and a quarter note E4. The staff concludes with a half note D4, a quarter note C4, and a quarter note B3.

Second staff of music for 'Silent Night'. It continues the melody with a half note A3, a quarter note G3, and a quarter note F#3. The staff continues with a half note E3, a quarter note D3, and a quarter note C3. The staff concludes with a half note B2, a quarter note A2, and a quarter note G2.

Third staff of music for 'Silent Night'. It continues the melody with a half note F#2, a quarter note E2, and a quarter note D2. The staff continues with a half note C2, a quarter note B1, and a quarter note A1. The staff concludes with a half note G1, a quarter note F#1, and a quarter note E1.

Fourth staff of music for 'Silent Night'. It continues the melody with a half note D2, a quarter note C2, and a quarter note B1. The staff continues with a half note A1, a quarter note G1, and a quarter note F#1. The staff concludes with a half note E1, a quarter note D1, and a quarter note C1.

*Up on the Housetop*

Musical score for 'Up on the Housetop' in G major and common time. The score consists of four staves of music. The melody is characterized by eighth and sixteenth notes, often beamed together, and includes several rests. The piece concludes with a double bar line.

*We Three Kings*

Musical score for 'We Three Kings' in G major and 3/4 time. The score consists of five staves of music. The melody is primarily composed of quarter and half notes, many of which are connected by slurs, indicating a smooth, flowing line. The piece ends with a double bar line.

*We Wish You a Merry Christmas*



*Fine*



*D.C. al Fine*

*Happy  
Holidays!*